

Operating Instructions for Rod Thermostat

Model: TEA-S



1. Contents

1. Contents.....	2
2. Note	3
3. Instrument Inspection.....	3
4. Regulation Use	3
5. Operating Principle.....	4
6. Mechanical Connection.....	4
7. Electrical Connection	5
7.1 General	5
8. Technical Information.....	6
9. Order Codes	6
10. Dimensions	6
11. Disposal	7
12. EU Declaration of Conformance	8

Manufactured and sold by:

Kobold Messring GmbH
Nordring 22-24
D-65719 Hofheim
Tel.: +49(0)6192-2990
Fax: +49(0)6192-23398
E-Mail: info.de@kobold.com
Internet: www.kobold.com

2. Note

Please read these operating instructions before unpacking and putting the unit into operation. Follow the instructions precisely as described herein.

The instruction manuals on our website www.kobold.com are always for currently manufactured version of our products. Due to technical changes, the instruction manuals available online may not always correspond to the product version you have purchased. If you need an instruction manual that corresponds to the purchased product version, you can request it from us free of charge by email (info.de@kobold.com) in PDF format, specifying the relevant invoice number and serial number. If you wish, the operating instructions can also be sent to you by post in paper form against an applicable postage fee.

Operating instructions, data sheet, approvals and further information via the QR code on the device or via www.kobold.com

The devices are only to be used, maintained and serviced by persons familiar with these operating instructions and in accordance with local regulations applying to Health & Safety and prevention of accidents.

When used in machines, the measuring unit should be used only when the machines fulfil the EC-machine guidelines.

3. Instrument Inspection

Instruments are inspected before shipping and sent out in perfect condition. Should damage to a device be visible, we recommend a thorough inspection of the delivery packaging. In case of damage, please inform your parcel service / forwarding agent immediately, since they are responsible for damages during transit.

Scope of delivery:

The standard delivery includes:

- Rod and Air-Duct Thermostat model: TEA-S

4. Regulation Use

Any use of the Thermostat, model: TEA-S, which exceeds the manufacturer's specification may invalidate its warranty. Therefore, any resulting damage is not the responsibility of the manufacturer. The user assumes all risk for such usage.

5. Operating Principle

The rod thermostats are fitted with liquid-filled probes made of copper that act as temperature-dependant pressure probes. A change in temperature causes a pressure change in the probe, which is transferred to a switch by a bellows system. A compression spring acts as a counteracting force. The switching values are set by changing the initial stress of the compression spring with a setpoint spindle. A thermowell with R 1/2 external thread made of brass or stainless steel (optional) is part of the scope of delivery. The rod thermostats are available with adjustable switching difference or temperature switch, temperature controllers and safety temperature limiters according to DIN 3440.

Function

TR (powerplant)

Contacts 2-3 (red-white) open with temperature rise to the adjusted value.

STB

Contacts 2-1 open with temperature rise to the adjusted value. A reset operation is only possible after cooling around approx. 15 K - 20 K.

6. Mechanical Connection

Before Installing:

- Remove all packing materials and transport retainers and ensure that no such materials remain in the device.
- Make sure that the maximum temperature of the device is not exceeded. (see section **Fehler! Verweisquelle konnte nicht gefunden werden. Fehler! Verweisquelle konnte nicht gefunden werden.**)

The rod thermostat, TEA-S, is fastened by the external thread to the system.

7. Electrical Connection

7.1 General

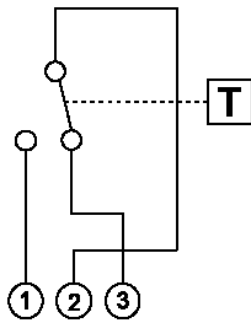


Attention! Make sure that the voltage values of your system correspond with the voltage values of the measuring unit.

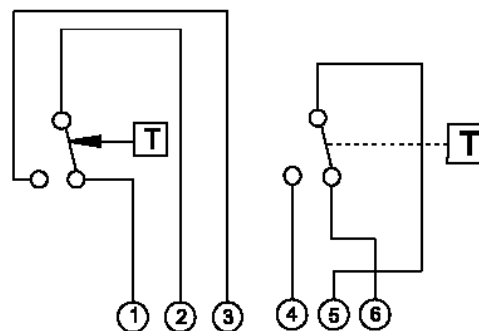


Attention! Make sure that the supply wires are de-energized.

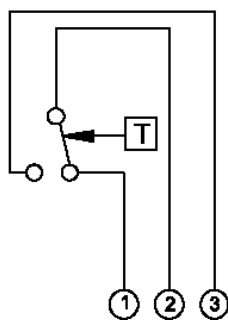
7.1.1 TEA-SR, TEA-SW, TEA-SB



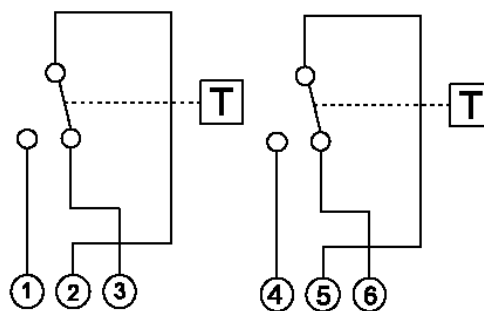
TR



STB+TR



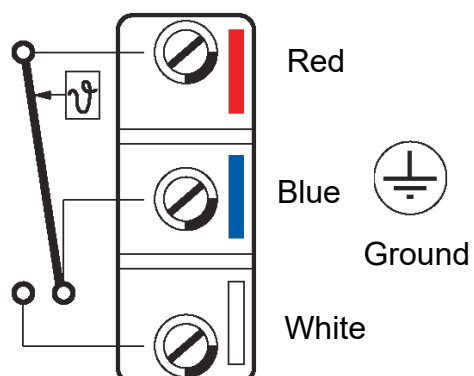
STB



TR

TW

7.1.2 TEA-S3, TEA-S2



8. Technical Information

Operating instructions, data sheet, approvals and further information via the QR code on the device or via www.kobold.com

9. Order Codes

Operating instructions, data sheet, approvals and further information via the QR code on the device or via www.kobold.com

10. Dimensions

Operating instructions, data sheet, approvals and further information via the QR code on the device or via www.kobold.com

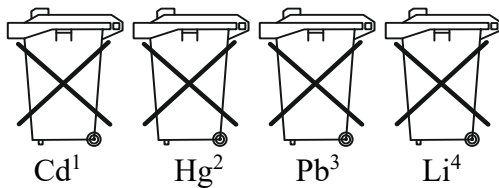
11. Disposal

Note!

- Avoid environmental damage caused by media-contaminated parts
- Dispose of the device and packaging in an environmentally friendly manner
- Comply with applicable national and international disposal regulations and environmental regulations.

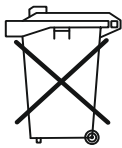
Batteries

Batteries containing pollutants are marked with a sign consisting of a crossed-out garbage can and the chemical symbol (Cd, Hg, Li or Pb) of the heavy metal that is decisive for the classification as containing pollutants:



1. „Cd" stands for cadmium
2. „Hg" stands for mercury
3. „Pb" stands for lead
4. „Li" stands for lithium

Electrical and electronic equipment



12. EU Declaration of Conformance

We, KOBOLD Messring GmbH, Hofheim-Ts, Germany, declare under our sole responsibility that the product:

Rod Thermostat Model: TEA – S

to which this declaration relates is in conformity with the standards noted below:

EN 60730-1:2011 Automatic electrical controls for household and similar use -
Part 1: General requirements

EN 50581:2012 Technical documentation for the assessment of electrical
and electronic products with respect to the restriction of hazardous substances

Also, the following EU guidelines are fulfilled:

2014/30/EU	EMC Directive
2014/35/EU	Low Voltage Directive
2011/65/EU	RoHS

Hofheim, 02. Febr. 2017



H. Peters
General Manager



M. Wenzel
Proxy Holder