

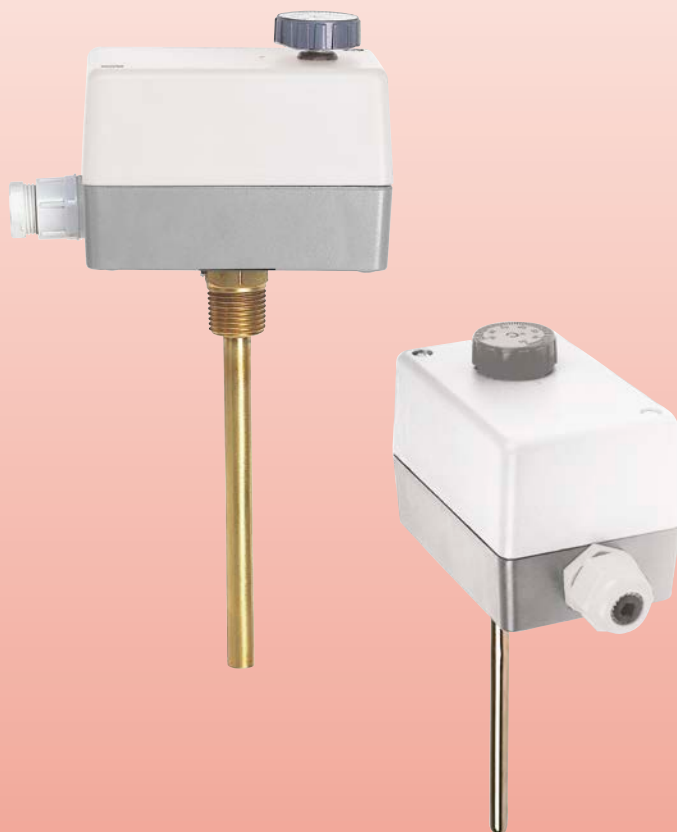


## Rod Thermostats for general applications

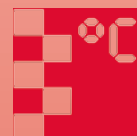


measuring  
•  
monitoring  
•  
analysing

### TEA-S



- Switching range:  
-30 ... +30 °C ... +50 ... +120 °C
- Material:  
Housing: plastic  
Probe: copper
- Single contact switching



KOBOLD companies worldwide:

AUSTRALIA, AUSTRIA, BELGIUM, BULGARIA, CANADA, CHINA, CZECHIA, FRANCE, GERMANY, GREAT BRITAIN, HUNGARY, INDIA, INDONESIA, ITALY, MALAYSIA, MEXICO, NETHERLANDS, PERU, POLAND, REPUBLIC OF KOREA, RUSSIA, SPAIN, SWITZERLAND, THAILAND, TUNISIA, TURKEY, USA, VIETNAM

KOBOLD Messring GmbH  
Nordring 22-24  
D-65719 Hofheim/Ts.  
Head Office:  
+49(0)6192 299-0  
+49(0)6192 23398  
info.de@kobold.com  
www.kobold.com

## Description

The rod thermostats are fitted with liquid-filled probes made of copper that act as temperature-dependant pressure probes. A change in temperature causes a pressure change in the probe, which is transferred to a switch by a bellows system. A compression spring acts as a counteracting force. The switching values are set by changing the initial stress of the compression spring with a setpoint spindle. A thermowell with R ½ external thread made of brass or stainless steel (optional) is part of the scope of delivery. The rod thermostats are available with adjustable switching difference or temperature switch, temperature controllers and safety temperature limiters according to DIN 3440.

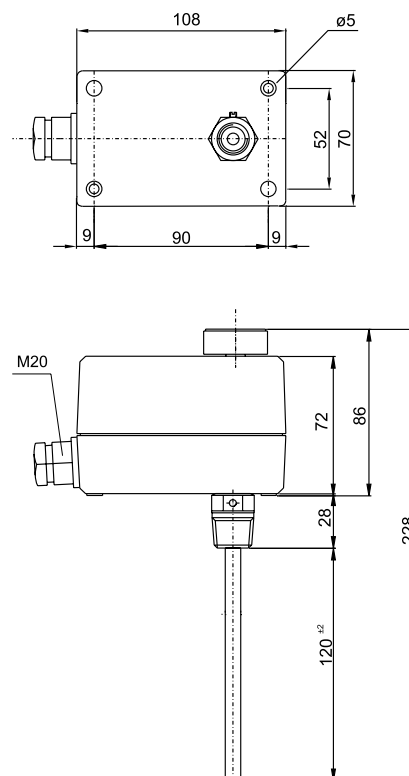
## Rod thermostats with fixed or adjustable switching difference



## Technical Details

Material:	
Housing:	impact-resistant plastic
Probe:	copper, liquid-filled
Thermowell:	brass
Connection:	R ½ male, immersion depth 120 mm
Contact operation:	single-pole, floating changeover contact, dust proof
Hysteresis:	adjustable from inside or fixed
Switching capacity:	24 - 250 V <sub>AC</sub> , 15 A at 250 V <sub>AC</sub> 8 A at 250 V <sub>AC</sub> inductive
Ambient temperature:	max. 65 °C
Protection:	IP 65

## Dimensions [mm]



## Applications

- Monitoring and control of temperatures of liquids and gases
- Heating, ventilation, air conditioning technology
- Mechanical engineering, vessel and equipment manufacturing

## Order Details (Example: TEA-S 3133 M A)

Setting range	Max. probe temperature	Order number		Thermowell material	Option
		Hysteresis 1 K fixed	Hysteresis 2-20 K adjustable		
-30 ... +30 °C	60 °C	TEA-S 3133... <sup>1)</sup>	TEA-S 2133... <sup>2)</sup>	..M.. = brass	..0 = without ..A = full internal adjustment
0 ... +60 °C	75 °C	TEA-S 3106...	TEA-S 2106...		
+20 ... +90 °C	100 °C	TEA-S 3129... <sup>2)</sup>	TEA-S 2129...		
+50 ... +120 °C	140 °C	TEA-S 3112... <sup>3)</sup>	-		

<sup>1)</sup> Only with option »A«

<sup>2)</sup> Only with option »0«

<sup>3)</sup> Only with thermowell material / option combination »M0«