

## Pressure gauge with diaphragm seal for the paper industry

Nominal dia. 100



measuring  
•  
monitoring  
•  
analysing



### Features

- Compact design
- Easily cleaned and sterilized
- Indirect pressure measurement
- Small reduction of inner pipe size

### Description

Diaphragm seals are mounted direct to the pressure gauge or connected to the measuring unit by using capillary tube. The connection has to be hermetically sealed to ensure proper transmission of pressure by the filling media thus guaranteeing the correct measurement.

The pressure in the process medium in front of the diaphragm is transmitted via the filling to the movement where it causes a deflection of the measuring element which in turn indicates the current pressure.

### Ranges

0...25 bar to 0...40 bar

### Applications

Paper industry

KOBOLD offices exist in the following countries:

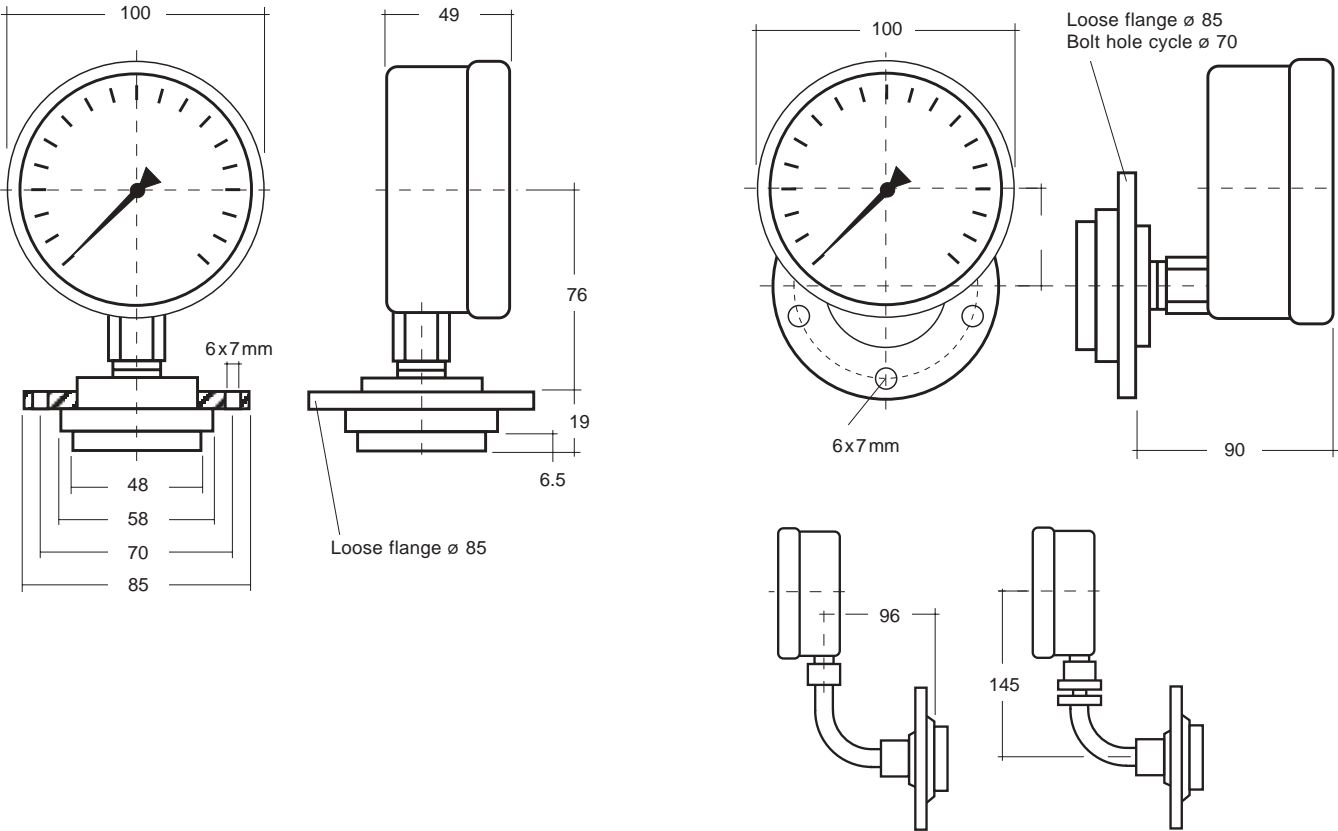
ARGENTINA, AUSTRIA, BELGIUM, BRAZIL, CANADA,  
CHINA, FRANCE, GREAT BRITAIN, ITALY, NETHERLANDS,  
POLAND, SWITZERLAND, USA, VENEZUELA

KOBOLD Messring GmbH  
Nordring 22-24  
D-65719 Hofheim/Ts.  
☎ (06192) 299-0  
Fax (06192) 23398  
E-mail: [info.de@kobold.com](mailto:info.de@kobold.com)  
Internet: [www.kobold.com](http://www.kobold.com)

Technical data

Model	MAN	RF 2C...D	RF 2D...D	RF 2E...D	RF 2F...D	Options
Nominal size	100 mm					
Symbol						with vibration damping
Accuracy class	1.6					
Indicating range	0...25 to 0...40					
Max. pressure	static load: up to full scale value alternating load: 0.9 times full scale value					
Overrange protection	short-term: 1.3 times full scale value					
Housing	1.4301					
Ring	1.4301					
Window	glass					
Dial	aluminum, white					
Pointer	aluminum, black					
Movement	Brass					
Measuring element	Brass					
Connection flange	ø 85 mm steel					stainless steel
- position	bottom		back	back		
- diaphragm	ø 48 mm, 1.4571					
Fluid filling						glycerine
Protection	IP 54					IP 65
Temperatures	- medium - ambient					
	Tmax. +100°C Tmax. +40°C					

Dimensional drawings





### Features

- Protection of the measuring device against aggressive, highly viscous, solidifying or crystallizing media
- Protection against high process temperatures or change of temperatures
- Protection of the measuring device against vibrations by use of capillary tube
- Damping of pressure changes and pressure peaks
- Compact design following special hygienic requirements

### Description

Diaphragm seals transmit the process pressure to the measuring instrument, with the diaphragm forming a hermetical seal between the medium and measuring instrument.

By selecting the correct diaphragm seal, application problems can be solved, which would not be possible without them.

### Ranges

depending on model of diaphragm seal  
0...1 bar to 0...60 bar

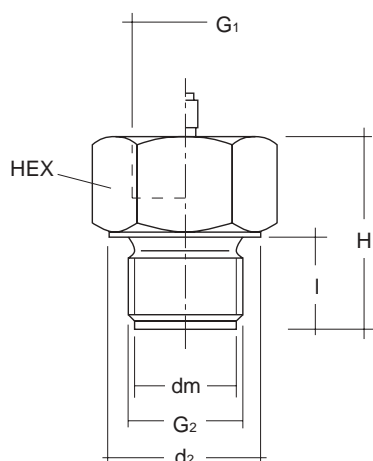
### Applications

Chemical industry, engineering,  
machine construction,  
food industries

KOBOLD offices exist in the following countries:

ARGENTINA, AUSTRIA, BELGIUM, BRAZIL, CANADA,  
CHINA, FRANCE, GREAT BRITAIN, ITALY, NETHERLANDS,  
POLAND, SWITZERLAND, USA, VENEZUELA

KOBOLD Messring GmbH  
Nordring 22-24  
D-65719 Hofheim/Ts.  
☎ (06192) 299-0  
Fax (06192) 23398  
E-mail: [info.de@kobold.com](mailto:info.de@kobold.com)  
Internet: [www.kobold.com](http://www.kobold.com)



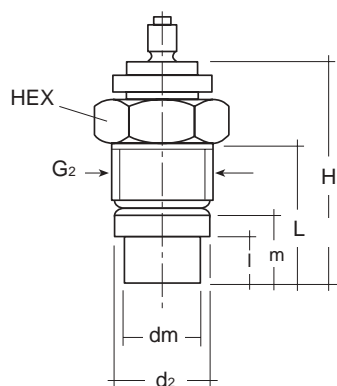
### Diaphragm seal GF

#### with fixed male thread G 1/2 male to G 1 1/4 male

for direct mounting to pressure gauges dia. 63, 100 and 160 or capillary tube.

Range: 0 - 6 bar to 0 - 1000 bar  
 Temperature range: -40 °C to +200 °C  
 Material: st.st. 1.4301, st.st. 1.4571, others on request  
 Diaphragm: front flush, material st.st. 1.4571  
 Max. length of capillary tube: up to 15 m, if required with protection hose  
 Filling fluid: depending on operating conditions

Model for direct mounting	Model for capillary tube	G <sub>2</sub>	G <sub>1</sub>	dm	HEX	d <sub>2</sub>	I	H <sub>max</sub>	Range (bar)	
									min.	max.
DRM-600R15	DRM-601R15	G 1/2 A	G 1/2	18	27	27	20	42	0-100	0-1000
DRM-600R20	DRM-601R20	G 3/4 A	G 1/2	23.8	36	36	20	46	0-40	0-1000
DRM-600R25	DRM-601R25	G 1 A	G 1/2	29.5	41	40.5	20	46	0-10	0-600
DRM-600R32	DRM-601R32	G 1 1/4 A	G 1/2	38	50	49.5	20	46	0-6	0-600
100 °C	200 °C	max. medium temperature								

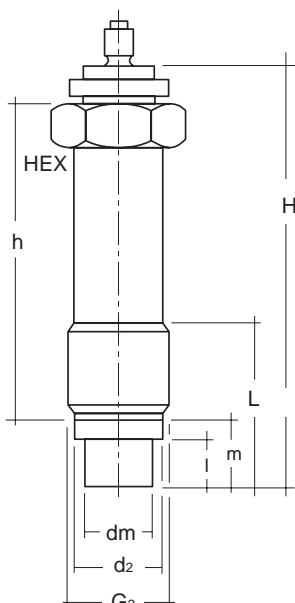


### Diaphragm seal ø 18, rotatable, short

with running nut for connection of capillary tube to pressure gauges dia. 63, 100 and 160.

Range: 0 - 100 bar to 0 - 600 bar  
 Temperature range: 0 °C to +350 °C  
 Material: st.st. 1.4301, st.st. 1.4571, others on request  
 Diaphragm: front flush, material st.st. 1.4571  
 Max. length of capillary tube: up to 10 m, if required with protection hose  
 Filling fluid: MF 7 recommended

Model for capillary tube	G <sub>2</sub>	dm	d <sub>2</sub>	HEX	I	m	L	H
DRM-620R20	G 3/4 A	18	23.8	32	11	17	35	60
350 °C	max. medium temperature							

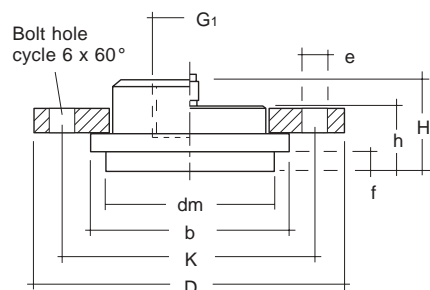


### Diaphragm seal ø 18, rotatable, long

with running nut for connection of capillary tube to pressure gauges dia. 63, 100 and 160.

Range: 0 - 100 bar to 0 - 600 bar  
 Temperature range: 0 °C to +350 °C  
 Material: st.st. 1.4301, st.st. 1.4571, others on request  
 Diaphragm: front flush, material st.st. 1.4571  
 Max. length of capillary tube: up to 10 m, if required with protection hose  
 Filling fluid: MF 7 recommended

Model for capillary tube	G <sub>2</sub>	dm	d <sub>2</sub>	HEX	I	m	L	h	H
DRM-620/1R20	G 3/4 A	18	23.8	32	11	17	45	76	107
350 °C	max. medium temperature								

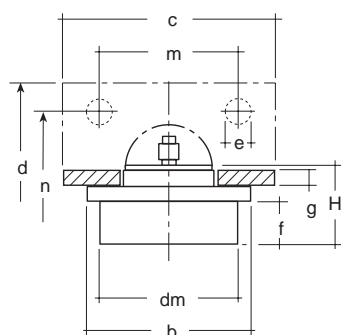


## Diaphragm seal ø 48

with rectangle flange for connection of capillary tube  
to pressure gauges dia. 63, 100 and 160

Range:	0 - 4 bar to 0 - 100 bar
Temperature range:	-20°C to +200°C
Material:	st. st. 1.4301, st. st. 1.4571, others on request
Diaphragm:	front flush, material st. st. 1.4571
Flange:	ø 85, passivated steel, 1.4571, aluminium
Max. length of capillary tube:	up to 15 m, if required with protection hose
Filling fluid:	depending on operating conditions

Model for direct mounting	Model for capillary tube	dm	b	D	K	e	f	h	H	G <sub>1</sub>
DRM-622F48	DRM-622/1F48	48	58	85	70	7	6.5	18	25	G1/2
100°C	200°C	max. medium temperature								

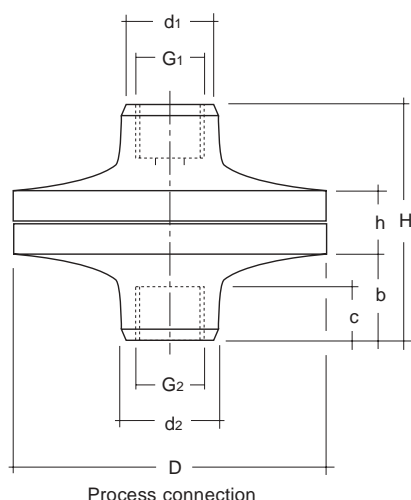


## Membrane pressure adaptor ø 38

with rectangle flange for connection of capillary tube  
to pressure gauges NG 63, NG 100 and NG 160

Measuring range:	0 - 4 bar to 0 - 100 bar
Temperature range:	-20°C to +250°C
Material:	W.1.4301, W.1.4571, others on request
Diaphragm:	front flush, material st. st. 1.4571
Rectangle flange:	passivated steel
Max. length of capillary tube:	up to 12 metres, if required with protective tube
Filling fluid:	depending on operating conditions

Model	dm	b	c	d	e	f	g	H	m	n
DRM-621F38	38	45	58	50	6.5	12	6	25	45	35
250°C	max. medium temperature									



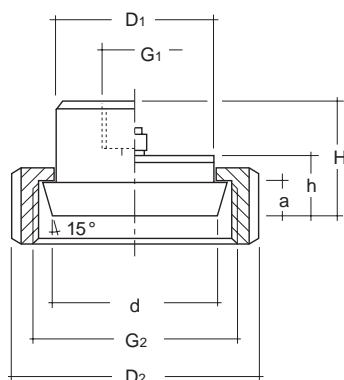
## Diaphragm seal of plastic

for direct mounting to pressure gauges dia. 63, 100 and 160  
or capillary tube

Range:	0 - 4 bar to 0 - 16 bar
Temperature range:	0°C to +80°C
Material:	PVC (poly vinyl chloride), PP (polypropylene) PVDF (poly vinyl fluoride)
Diaphragm:	hypalone with PTFE coating
Max. length of capillary tube:	up to 1 m, if required with protection hose
Filling fluid:	depending on operating conditions

Model	D	G <sub>1</sub>	G <sub>2</sub>	d <sub>1</sub>	d <sub>2</sub>	b	c	h	H
DRM-630R15	90	G1/2	G1/2	32	32	25	18	34	75
DRM-630R08	90	G1/4	G1/4	32	32	25	18	24	75

630 = PVC / 631 = PP / 632 = PVDF

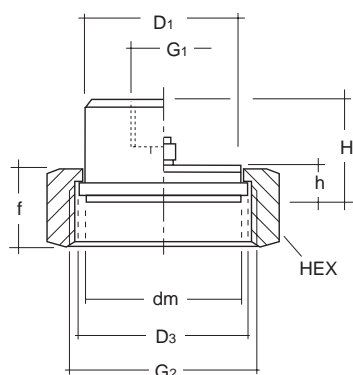


## Diaphragm seal with union nut to DIN 11851

for direct mounting to pressure gauges dia. 63, 100 and 160 or capillary tube. Also available for electronic pressure sensors or in combination with digital pressure gauges.

Range:	0 - 1 bar to 0 - 40 bar
Temperature range:	-10°C to +200°C (not with electr. transm.)
Material:	st.st. 1.4301, st.st. 1.4571, others on request
Diaphragm:	front flush, material st.st. 1.4571
Max. length of capillary tube:	up to 10 m, if required with protection hose
Filling fluid:	compatible with foodstuffs

Model for direct mounting	Model for capillary tube	G <sub>2</sub>	D <sub>1</sub>	D <sub>2</sub>	G <sub>1</sub>	D <sub>N</sub>	d	a	h	H
DRM-602R25	DRM-603R25	Rd52x1/6"	35	63	G1/2	25	40	8	16	31
DRM-602R32	DRM-603R32	Rd58x1/6"	41	70	G1/2	32	46	11	16	32
DRM-602R40	DRM-603R40	Rd65x1/6"	48	78	G1/2	40	52	11	16	32
DRM-602R50	DRM-603R50	Rd78x1/6"	61	92	G1/2	50	64	11	16	32
100°C	200°C	max. medium temperature								

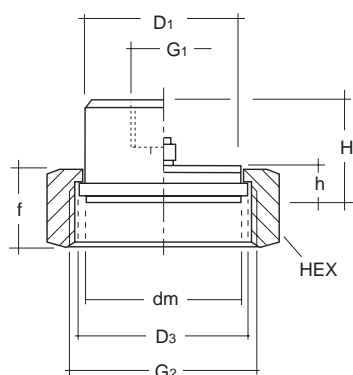


## Diaphragm seal with union nut to IDF standard

for direct mounting to pressure gauges dia. 63, 100 and 160 or capillary tube. Also available for electronic pressure sensors or in combination with digital pressure gauges.

Range:	0 - 1 bar to 0 - 100 bar
Temperature range:	-10°C to +200°C (not with electr. transm.)
Material:	st.st. 1.4301, st.st. 1.4571, others on request
Diaphragm:	front flush, material st.st. 1.4571
Max. length of capillary tube:	up to 10 m, if required with protection hose
Filling fluid:	compatible with foodstuffs

Model for direct mounting	Model for capillary tube	G <sub>2</sub> IDF	D <sub>1</sub> , dm	D <sub>3</sub>	G <sub>1</sub>	HEX	f	h	H
DRM-604R25	DRM-605R25	1"	29.5	33.5	G1/2	47	30	13	31
DRM-604R40	DRM-605R40	1 1/2"	42.5	47	G1/2	62	30	13	30.5
DRM-604R50	DRM-605R50	2"	56	60	G1/2	77	30	13	30.5
100°C	200°C	max. medium temperature							

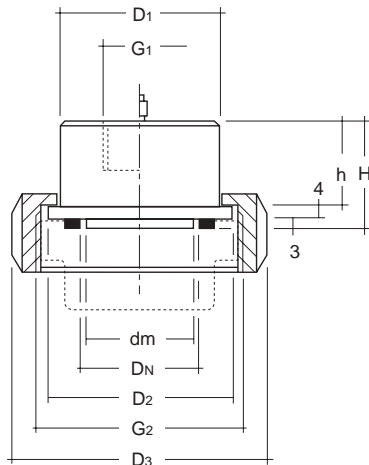


## Diaphragm seal with union nut to APV-RJT standard

for direct mounting to pressure gauges dia. 63, 100 and 160 or capillary tube. Also available for electronic pressure sensors or in combination with digital pressure gauges.

Range:	0 - 1 bar to 0 - 100 bar
Temperature range:	-10°C to +200°C (not with electr. transm.)
Material:	st.st. 1.4301, st.st. 1.4571, others on request
Diaphragm:	front flush, material st.st. 1.4571
Max. length of capillary tube:	up to 10 m, if required with protection hose
Filling fluid:	compatible with foodstuffs

Model for direct mounting	Model for capillary tube	G <sub>2</sub>	D <sub>1</sub> , dm	D <sub>3</sub>	G <sub>1</sub>	HEX	f	h	H
DRM-614R25	DRM-615R25	APV-RJT 1"	29.5	33.5	G1/2	47	30	13	31
DRM-614R40	DRM-615R40	APV-RJT 1 1/2"	42.5	47	G1/2	62	30	13	30.5
DRM-614R50	DRM-615R50	APV-RJT 2"	56	60	G1/2	77	30	13	30.5
100°C	200°C	max. medium temperature							

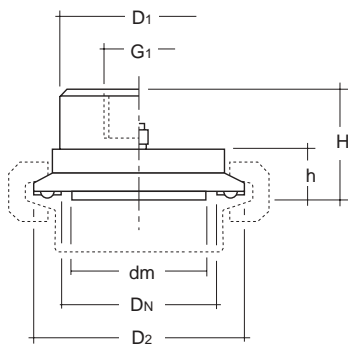


## Diaphragm seal with union nut to SMS standard

for direct mounting to pressure gauges dia. 63, 100 and 160 or capillary tube. Also available for electronic pressure sensors or in combination with digital pressure gauges.

Range:	0 - 1 bar to 0 - 10 bar
Temperature range:	-10°C to +200°C (not with electr. transm.)
Material:	st.st. 1.4301, st.st. 1.4571, others on request
Diaphragm:	front flush, material st.st. 1.4571
Max. length of capillary tube:	up to 10 m, if required with protection hose
Filling fluid:	compatible with foodstuffs

Model for direct mounting	Model for capillary tube	G <sub>2</sub> SMS-standard	D <sub>1</sub>	D <sub>2</sub>	dm	G <sub>1</sub>	D <sub>N</sub>	D <sub>3</sub>	h	H
DRM-610R40	DRM-611R40	11/2"	47.5	55	34.5	G1/2	11/2"	74	20	27
DRM-610R50	DRM-611R50	2"	60	65	45.5	G1/2	2"	84	20	27
100°C	200°C	max. medium temperature								

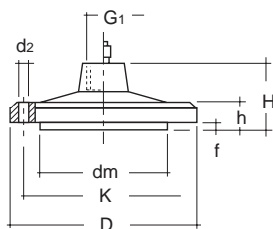


## Diaphragm seal with clamp connection

for direct mounting to pressure gauges dia. 63, 100 and 160 or capillary tube. Also available for electronic pressure sensors or in combination with digital pressure gauges.

Range:	0 - 2.5 bar to 0 - 10 bar
Temperature range:	-10°C to +200°C (not with electr. transm.)
Material:	st.st. 1.4301, st.st. 1.4571, others on request
Diaphragm:	front flush, material st.st. 1.4571
Max. length of capillary tube:	up to 10 m, if required with protection hose
Filling fluid:	compatible with foodstuffs

Model for direct mounting	Model for capillary tube	D <sub>N</sub>	D <sub>1</sub>	D <sub>2</sub>	dm	G <sub>1</sub>	h	H
DRM-612F40	DRM-613F40	11/2"	42.5	50.4	34.5	G1/2	10.5	25
DRM-612F50	DRM-613F50	2"	51	64	45.5	G1/2	10.5	25
100°C	200°C	max. medium temperature						

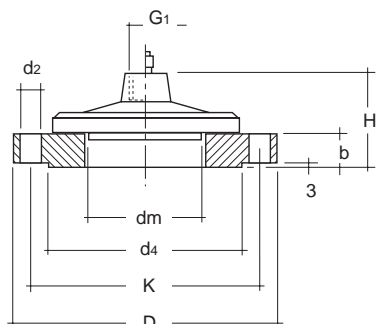


## Diaphragm seal with flange connection, diameter 100 mm

for direct mounting to pressure gauges dia. 63, 100 and 160 or capillary tube.

Range:	0 - 1 bar to 0 - 40 bar
Temperature range:	-40°C to +250°C
Material:	st.st. 1.4301, st.st. 1.4571, others on request
Diaphragm:	front flush, material st.st. 1.4571
Max. length of capillary tube:	up to 15 m, if required with protection hose
Filling fluid:	depending on operating conditions

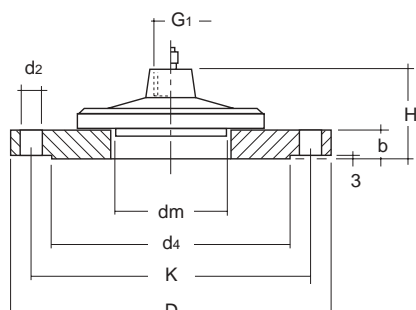
Model for direct mounting	Model for capillary tube	G <sub>1</sub>	dm	K	d <sub>2</sub>	D	f	b	H
DRM-624F100	DRM-624/1F100	G1/2	63.5	82	7	100	2	8	34.5
100°C	250°C	max. medium temperature							



**Diaphragm seal with open mounting flange, diameter 100 mm to DIN 2527 type C, DN 50, PN 40** for direct mounting to pressure gauges dia. 63, 100 and 160 or capillary tube.

Range: 0 - 1 bar to 0 - 40 bar  
 Temperature range: -40 °C to +250 °C  
 Material: st.st. 1.4301, st.st. 1.4571, others on request  
 Diaphragm: front flush, material st.st. 1.4571  
 Max. length of capillary tube: up to 15 m, if required with protection hose  
 Filling fluid: depending on operating conditions

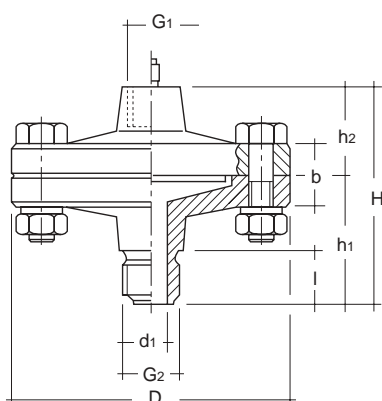
Model for direct mounting	Model for capillary tube	Flange								
		DN/PN	G <sub>1</sub>	dm	d <sub>4</sub>	K	D	d <sub>2</sub>	b	H
DRM-633F50	DRM-633/1F50	50/40	G 1/2	64	102	125	165	18	20	54.5
100 °C	250 °C	max. medium temperature								



**Diaphragm seal with open mounting flange, diameter 100 to DIN 2527 form C, DN 100, PN 6** for direct mounting to pressure gauges dia. 63, 100 and 160 or capillary tube.

Range: 0 - 1 bar to 0 - 6 bar  
 Temperature range: -40 °C to +250 °C  
 Material: st.st. 1.4301, st.st. 1.4571, others on request  
 Diaphragm: front flush, material st.st. 1.4571  
 Max. length of capillary tube: up to 15 m, if required with protection hose  
 Filling fluid: depending on operating conditions

Model for direct mounting	Model for capillary tube	Flange								
		DN/PN	G <sub>1</sub>	dm	d <sub>4</sub>	K	D	d <sub>2</sub>	b	H
DRM-633F100	DRM-633/1F100	100/6	G 1/2	64	148	170	210	18	16	50.5
100 °C	250 °C	max. medium temperature								

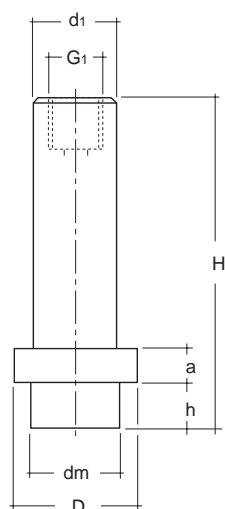


**Diaphragm seal with connection G 1/2 male and enlarged bore ø 10 mm** for direct mounting to pressure gauges dia. 63, 100 and 160 or capillary tube.

Range: 0 - 1 bar to 0 - 40 bar  
 Temperature range: -40 °C to +250 °C  
 Material: st.st. 1.4301, st.st. 1.4571, others on request  
 Diaphragm: front flush, material st.st. 1.4571  
 Max. length of capillary tube: up to 10 m, if required with protection hose  
 Filling fluid: depending on operating conditions

Model for direct mounting	Model for capillary tube	Flange								
		D	G <sub>1</sub>	G <sub>1</sub>	d <sub>1</sub>	b	l	h <sub>1</sub>	h <sub>2</sub>	H
DRM-625R15	DRM-625/1R15	100	G 1/2	G 1/2 A	10	18	20	46	34.5	80.5
100 °C	250 °C	max. medium temperature								



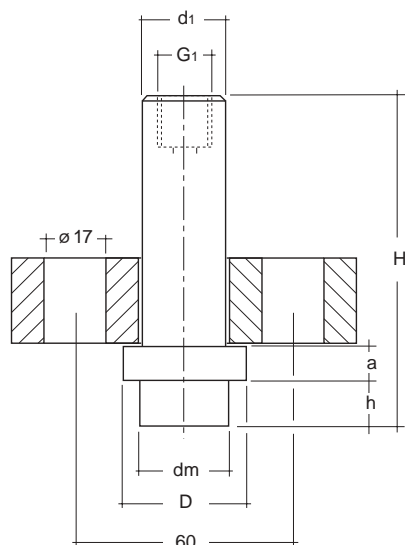


## Diaphragm seal for homogenizing machines without mounting flange

for direct mounting to pressure gauges dia. 63, 100 and 160.

Range:	0 - 100 bar to 0 - 1000 bar
Temperature range:	0 °C to +120 °C (calibration temperature +85 °C)
Material:	st. st. 1.4301, st. st. 1.4571
Diaphragm:	front flush, material st. st. 1.4571
Max. length of capillary tube:	not available
Filling fluid:	MF8 (foodstuff-compatible) recommended

Model	D	dm	d1	a	h	H	G1
DRM-189F23	34.5	23.8	22	10	12.5	90.5	G 3/8



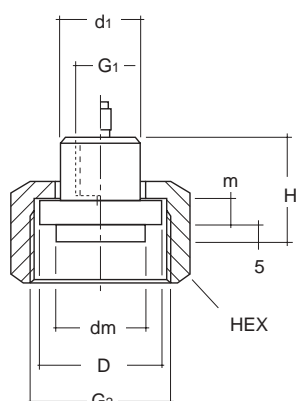
## Diaphragm seal for homogenizing machines with rectangle flange

for direct mounting to pressure gauges dia. 63, 100 and 160.

Range:	0 - 100 bar to 0 - 1000 bar
Temperature range:	0 °C to +120 °C (calibration temperature +85 °C)
Material:	st. st. 1.4301, st. st. 1.4571
Diaphragm:	front flush, material st. st. 1.4571
Rectangle flange:	1.4301
Max. length of capillary tube:	not available
Filling fluid:	MF8 (foodstuff-compatible) recommended

Model	D	dm	d1	a	h	H	G1
DRM-189/1F23	33.3	23.8	22	10	12.5	86.5	G 3/8

Rectangle flange: 95x43x25 mm



## Diaphragm seal with union nut

for direct mounting to pressure gauges dia. 63, 100 and 160 or capillary tube.

Range:	0 - 100 bar to 0 - 1600 bar
Temperature range:	0 °C to +120 °C
Material:	st. st. 1.4301, st. st. 1.4571
Diaphragm:	front flush, material st. st. 1.4571
Max. length of capillary tube:	up to 10 m, if required with protection hose
Filling fluid:	MF8 (foodstuff-compatible) recommended

Model for direct mounting	Model for capillary tube	G2	G1	HEX	dm	D	d1	m	H
DRM-616R45	DRM-617R45	M45x2	G 3/8	55	23.8	33.3	22	6	27
100 °C	120 °C	max. medium temperature							

---

**We can manufacture gauges  
to your specification, too!**



Simply call us!

## Inline diaphragm seal for Bourdon tube pressure gauges and pressure sensors



measuring  
•  
monitoring  
•  
analysing



### Features

- Design following special hygienic requirements
- For highly viscous applications
- Easily cleaning without removal
- Temperature medium up to 80°C (1/2 h up to 140°C)
- Application in food industry

### Description

The housing of the seal is manufactured in one piece.

The diaphragm, which moves in the same direction as the flow, is welded at both sides to the seal body. The pressure in the process medium in front of the diaphragm is transmitted via the filling to the pressure indicator.

The transition to the connections, following special hygienic requirements, and a flow-friendly design must avoid the bedding of the medium.

The cleaning of the seal is possible without removal from the pipe system.

### Applications

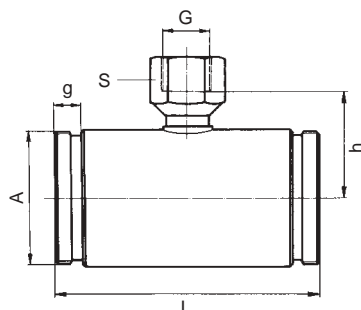
Food industry, beverage industry, pharmaceutical industry

KOBOLD offices exist in the following countries:

ARGENTINA, AUSTRIA, BELGIUM, BRAZIL, CANADA,  
CHINA, FRANCE, GREAT BRITAIN, ITALY, NETHERLANDS,  
POLAND, SWITZERLAND, USA, VENEZUELA

KOBOLD Messring GmbH  
Nordring 22-24  
D-65719 Hofheim/Ts.  
☎ (06192) 299-0  
Fax (06192) 23398  
E-mail: [info.de@kobold.com](mailto:info.de@kobold.com)  
Internet: [www.kobold.com](http://www.kobold.com)

## Dimensional drawings

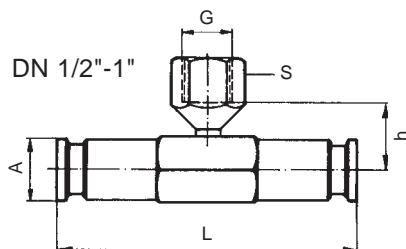
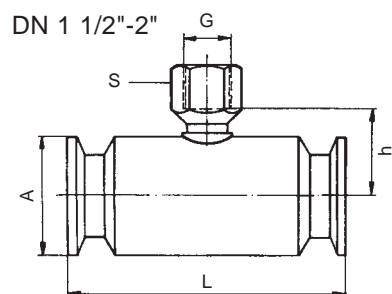


### Inline diaphragm seal sterile connection ISO for direct mounting and with capillary tube

Range: 1.6...40 bar to 2.5...40 bar (dependant on the pipe dia.)  
 Temperature range: up to 80 °C (1/2 h up to 140 °C)  
 Housing: st. st. 1.4571  
 Diaphragm tube: st. st. 1.4571 (DN 15/20), st. st. 1.4571 (DN 25/40), st. st. 1.4404 resp. 1.4435 (DN 50)  
 Socket connection: st. st. 1.4301 (DN 15/20), st. st. 1.4435 (DN 25, 40, 50)  
 Filling liquid: following operating conditions

Model for direct mounting	Model for capillary tube	DN	A	L	h	G	g	S
DRM-500D15	DRM-501D15	15	M30 x 2	130	26	G 1/4	12	17
DRM-500D20	DRM-501D20	20	M36 x 2	120	30	G 1/4	12	17
DRM-500D25	DRM-501D25	25	M42 x 2	120	33	G 1/2	12	27
DRM-500D40	DRM-501D40	40	M56 x 2	110	39	G 1/2	14	27
DRM-500D50	DRM-501D50	50	M68 x 2	100	45	G 1/2	14	27

DN	for tube	O-ring	Weight kg	Innerform
15	26.9 x 2.0	18.5 x 3.0	0.6	Square
20	33.7 x 2.0	25.0 x 3.0	0.8	Square
25	48.3 x 2.0	30.0 x 3.0	0.9	Hexagonal
40	60.3 x 2.6	45.0 x 3.0	1.3	Hexagonal
50	88.9 x 2.6	55.0 x 3.0	1.6	Hexagonal



### Inline diaphragm seal with clamp connection ISO 2852 for direct mounting

Range: 1.6..40 bar to 2.5..40 bar (dependant on the pipe dia.)\*  
 Temperature range: up to 80 °C (1/2 h up to 140 °C)  
 Housing: st. st. 1.4435  
 Diaphragm tube: st. st. 1.4435 (DN 15/20/25), st. st. 1.4404 resp. 1.4435 (DN 40/50)  
 Socket connection: st. st. 1.4301 (DN 15/20/25), st. st. 1.4435 (DN 40/50)  
 Filling liquid: following operating conditions

\*The range is dependant on the pipe diameter and the pressure sensor.

Model for direct mounting	DN	A	L	h	G	S	Weight kg	Innerform
DRM-502D15	1/2"	25	140	24	G 1/2	17	0.5	Square
DRM-502D20	3/4"	25	120	27	G 1/2	27	0.5	Square
DRM-502D25	1"	50.5	120	36	G 1/2	27	1.6	Square
DRM-502D40	1 1/2"	50.5	120	36	G 1/2	27	1.2	Hexagonal
DRM-502D50	2"	64	100	45	G 1/2	27	1.3	Hexagonal

### Capsule seal 33 mm standard with running nut G 3/4 A, M 28 x 1.5 for mounting to capillary tube of pressure gauge dia. 63, 100 and 160 mm

Range: 0 - 100 bar to 0 - 600 bar  
 Temperature range: -40 °C up to +350 °C  
 Material: st. st. 1.4301, st. st. 1.4571, others upon request  
 Tongue sensor: st. st. 1.4571  
 Max. length of capillary tube: up to 15 m, if required with protection hose  
 Filling liquid: MF 7 recommended

Model	HEX	G <sub>2</sub>	B	d <sub>1</sub>	d <sub>2</sub>	l	m	L	h	H
DRM-606R20	32	G3/4A	16.5	18	24	33	39	67	76	130
DRM-606R28	32	M28x1.5	16.5	18	24	33	39	67	76	130
350 °C	max. medium temperature									

